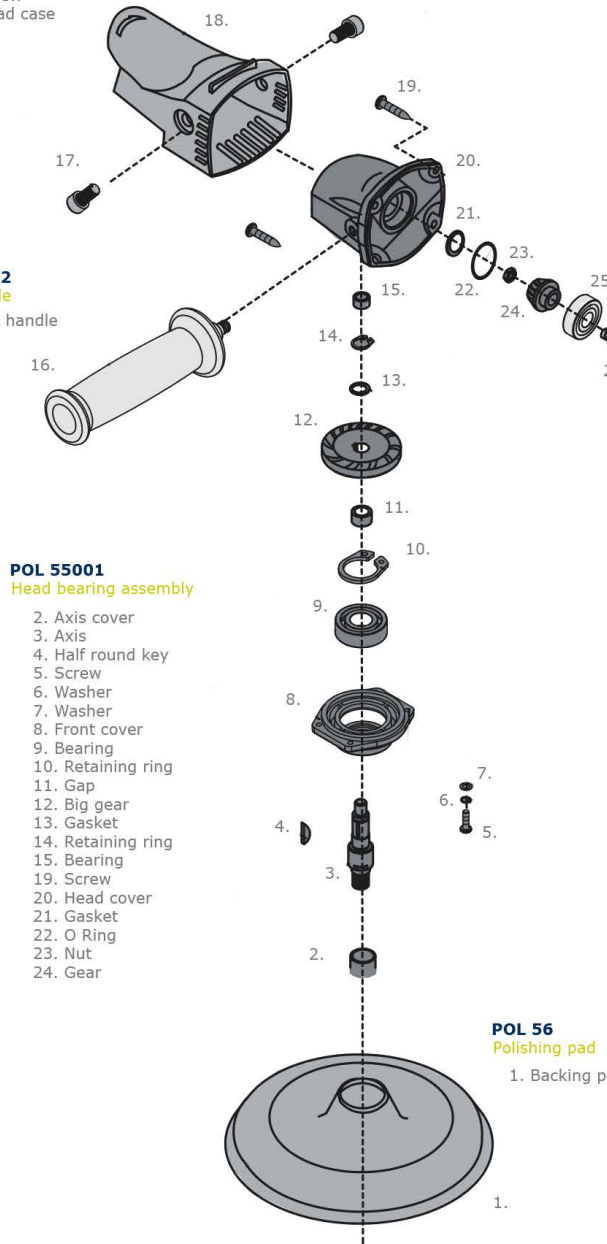


POL 55

Assembly list

- POL 55003**
Head case assembly
17. Screw
18. Head case

- POL 55002**
Side Handle
16. Side handle



- POL 55001**
Head bearing assembly

2. Axis cover
3. Axis
4. Half round key
5. Screw
6. Washer
7. Washer
8. Front cover
9. Bearing
10. Retaining ring
11. Gap
12. Big gear
13. Gasket
14. Retaining ring
15. Bearing
19. Screw
20. Head cover
21. Gasket
22. O Ring
23. Nut
24. Gear

- POL 55004**
Anker assembly

25. Bearing
26. Axis
27. Gear
15. Bearing
28. Gasket
29. Middle cover
30. O ring
31. Bearing
32. Armature

- POL 56**
Polishing pad
1. Backing pad M14

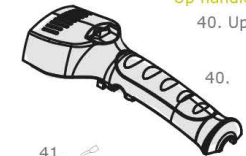
- POL 55005**
Anker assembly

33. Windshield
34. Screw
35. Stator
36. Bearing
37. Magnetic ring
38. Bearing sleeve
39. Housing
42. Carbon brush holder
44. Screw
45. Spring

- POL 55014**
Wrench
56. Wrench



- POL 55006**
Up handle
40. Up handle



- POL 55007**
Carbon brush
41. Carbon brush



- POL 55008**
Speed regulator Assembly
46. Speed governor
43. Inductance



- POL 55011**
Capacitance
49. Capacitance



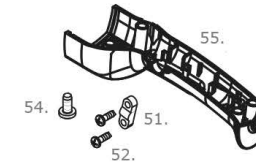
- POL 55010**
Power cable
48. Power cable



- POL 55009**
Cable sleeve
47. Cable sleeve



- POL 55013**
Base handler assembly
51. Plate
52. Screw
54. Screw
55. Under handle



- POL 55012**
Switch assembly
50. Switch
53. Switch

